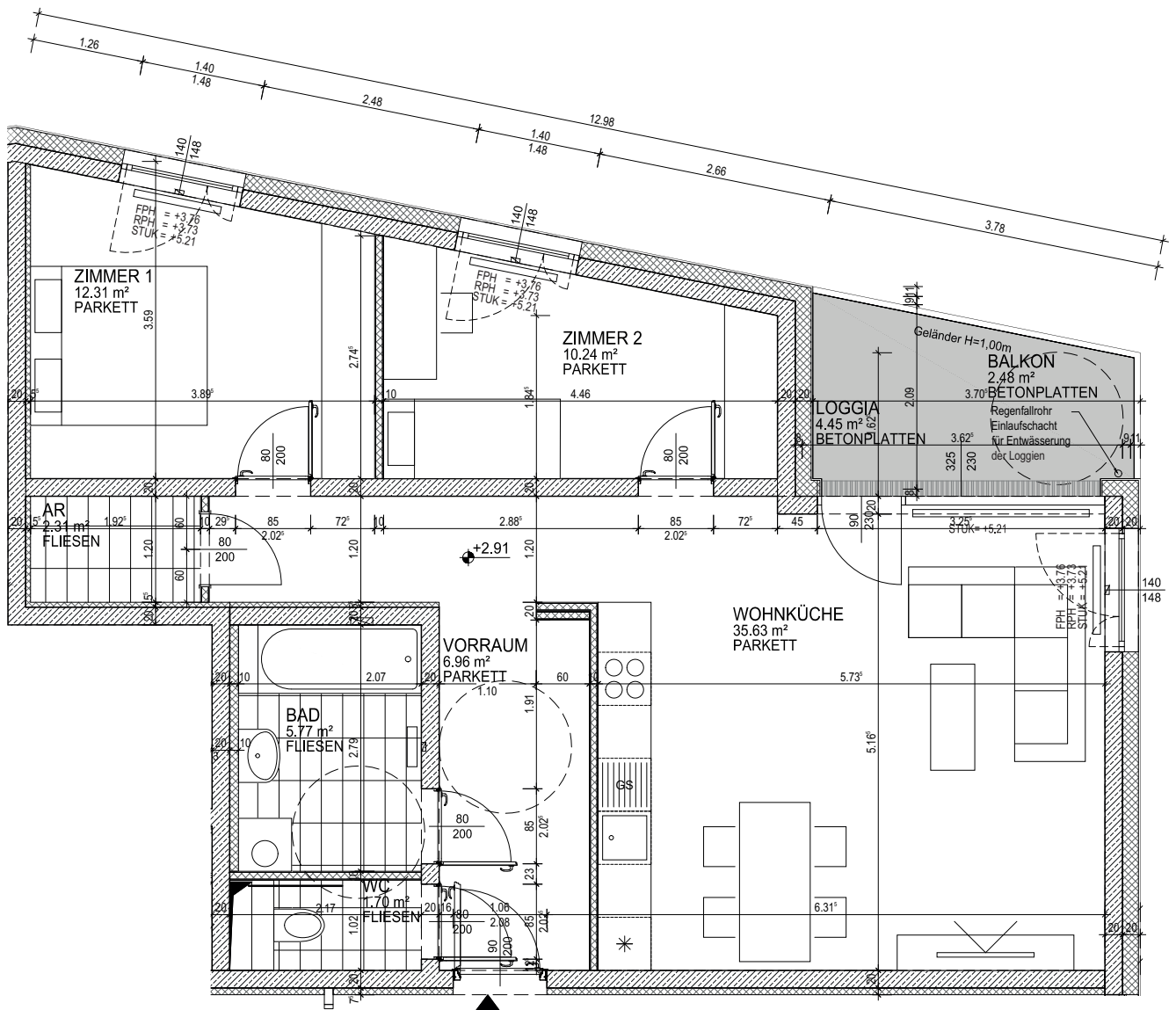
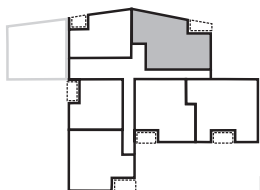


# Projekt- Grundrisse.



TOP 3.8  
74,92  
TYP 11



Maßstab 1:50

BT 3, Wohnung 8, 1.OG

Zimmer 3

Wohnfläche 74,92 m<sup>2</sup>

Balkon 2,48 m<sup>2</sup>

Loggia 4,45 m<sup>2</sup>

**SUMME 81,85 m<sup>2</sup>**