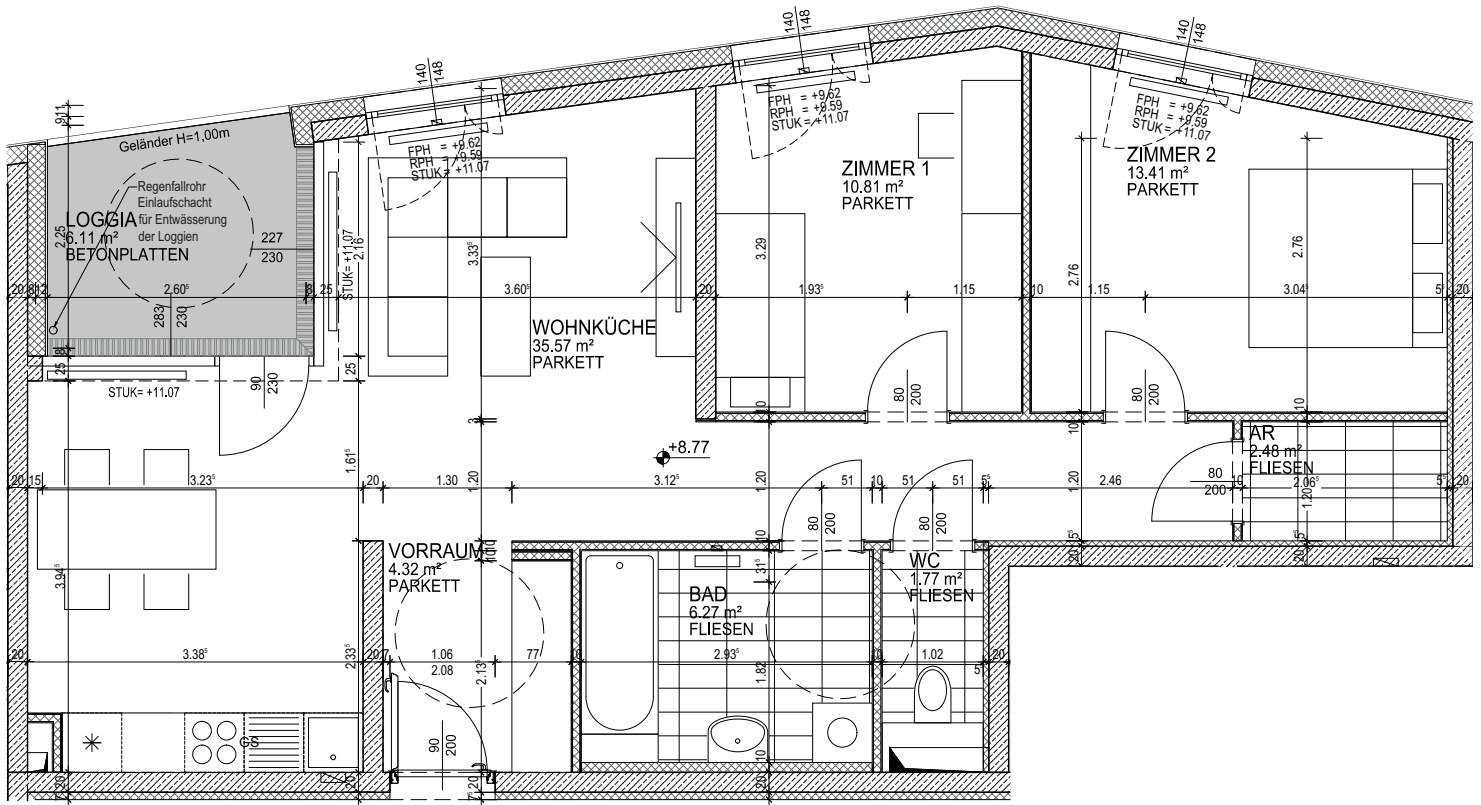
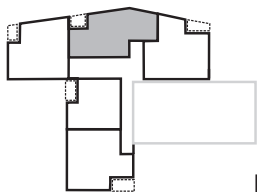


# Projekt-Grundrisse.



TOP 3.20  
74,63  
TYP 5



Maßstab 1:50

BT 3, Wohnung 20, 2.OG

Zimmer 3

Wohnfläche 74,63 m<sup>2</sup>

Loggia 6,11 m<sup>2</sup>

**SUMME 80,74 m<sup>2</sup>**